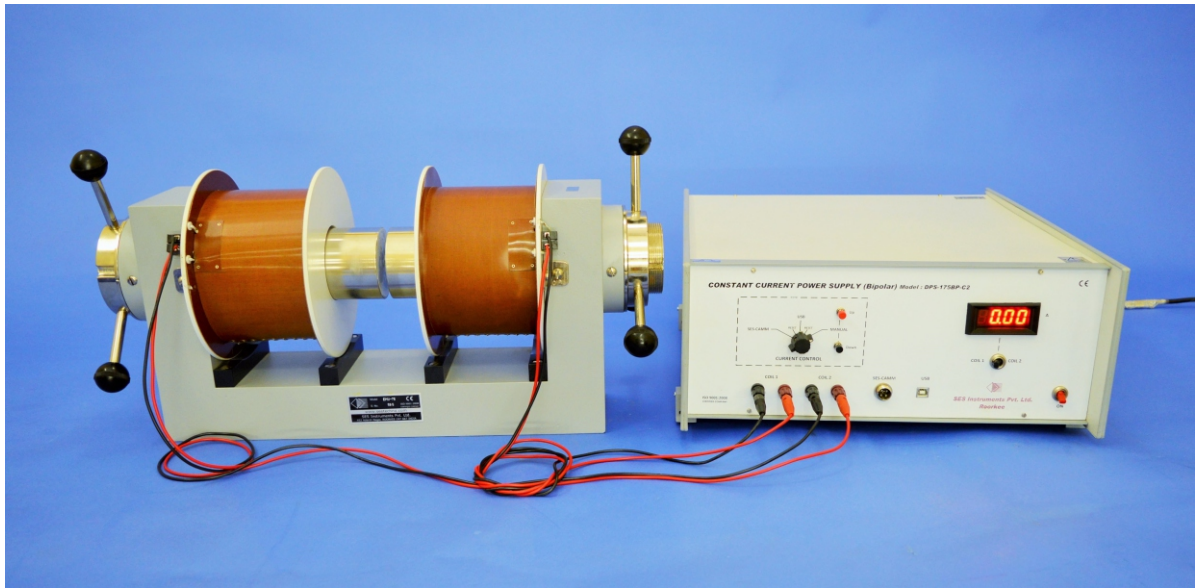


# DPS-175-BPC

## Electromagnet & Power Supply



### DPS-175-BPC

DPS-175-BPC is designed to be used with the Electromagnet, Model: EMU-75 as a bi-polar constant current power supply to generate magnetic field up to 11KG. The current requirement of  $\pm 3A$  per coil, i.e. a total of 6A is met by connecting six closely matched constant current sources in parallel. In this arrangement the first unit works as the 'master' with current adjustment control. All others are 'slave' units generating exactly the same current as the master. All the six constant current sources are individually IC controlled. The supply is protected against overload, short circuit and transients caused by inductance of the magnet coil. Three options are provided for adjusting current.

**1) Manual:** Up/ Down push button switches.

**2) USB:** The unit can be connected directly to a PC through an USB. SES-Data Access And Control is a built-in interface which gives user an option to set the current, store and tabulate it by a click of a button on the screen. Alternatively the data may be automatically entered into a table at user selectable interval. An 'END' button on the screen terminates the automatic tabulation. The data Stored in the table may then be displayed as a graph on the screen and may also be stored in an excel file for further processing. The software supplied with the unit is menu driven and is simple to operate.



# DPS-175-BPC

## Electromagnet & Power Supply

**3) SES-CAMM:** The unit can also be connected to a PC through an interface module SES-CAMM. SES-CAMM is a computer aided module for connecting multiple subunits of experiments. This enables the user to set a current profile on the screen and read the current, magnetic field with the help of one of our Gaussmeters and also one more arbitrary parameter. Typical application may be to automatically display the hysteresis loop of a material. This feature is particularly useful in making this model compatible with computerized versions of complete experiments from our company.

### Specifications

Current Range : -3A to +3A each coil connected in parallel

Load Regulation : 0.1% for load variation from 0 to max.

Line Regulation : 0.1% for  $\pm 10\%$  mains variation

Display : 3½ digit, 7 segment LED DPM

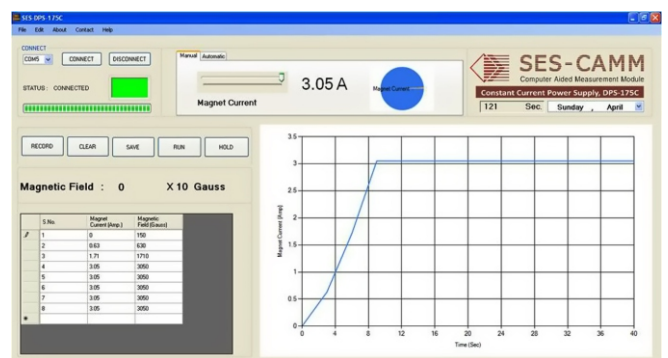
Interfacing : USB

Software : DACC and CAMM, both window compatible

Power : 220V  $\pm 10\%$ , 50Hz

Weight : 13Kg

Dimensions : 340mmx350mmx235mm



Computer is not included with the instruments.