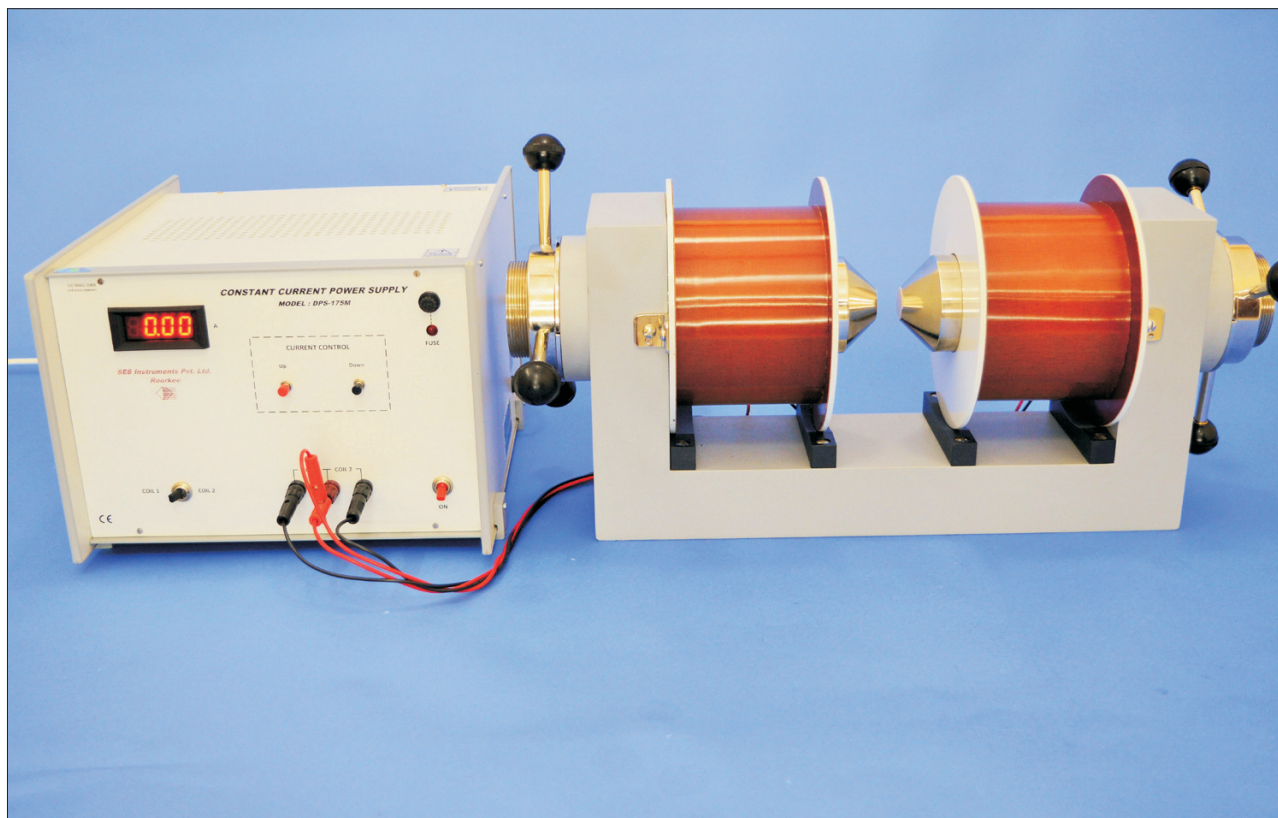


Electromagnet & Power Supply

SES Instruments Pvt Ltd.

EMU-75
DPS-175-C2



EMU-75

EMU-75 has the most widely used 'U' shaped soft iron yoke. The soft iron is of a special quality, structurally uniform, well machined and finished to meet the rigid standards.

The pole pieces are made from dead annealed soft iron blocks of the best quality available. They are well shaped, machined and finished. The air-gap is continuously variable up to 75mm with two way knobbed wheel screw adjusting system. Normally flat pole pieces are supplied. Tapered pole pieces can be supplied on special request.

The coils are wound on non-magnetic formers with uniform layers of S.E. copper wire. The new and modern design of the coils provides good thermal conductivity characteristics and eliminates troublesome hot spots even at high magnetic fields.

SPECIFICATIONS

Field Intensity	11KG at 10mm air-gap with flat pole pieces
Pole Pieces	75mm diameter
Energizing Coils	Two, each having a resistance of about 12 Ω
Power Requirement	0-90Vdc, 3A, if coils are connected in series. 0-45Vdc, 6A, if coils are connected in parallel
Weight:	81Kg

DPS-175-C2

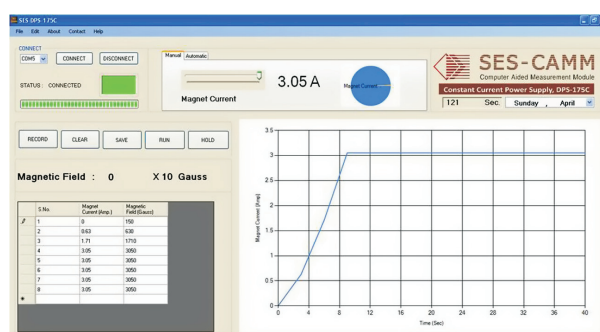
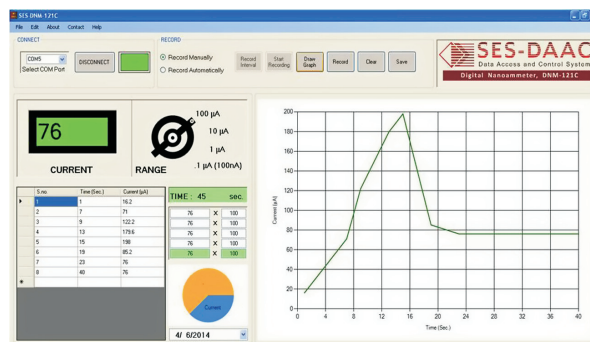
DPS-175-C2 is designed to be used with the Electromagnet, Model: EMU-75 as a constant current power supply to generate magnetic field upto 11KG. The current requirement of 3A per coil, i.e. a total of 6A is met by connecting six closely matched constant current sources in parallel. In this arrangement the first unit works as the 'master' with current adjustment control. All others are 'slave' units generating exactly the same current as the master. All the six constant current sources are individually IC controlled. Four options are provided for adjusting current.

1) **Manual:** Through Up/Down push button switches.

2) **External:** Controlled through a dc voltage 0-10V obtained from dSpace or otherwise.

3) **USB:** The unit can be connected directly to a PC through an USB. SES-Data Access And Control is a built-in interface which gives user an option to store a value as displayed on the meter and tabulate it by a click of a button on the screen. Alternatively the data may be automatically entered into a table at user selectable interval. An 'END' button on the screen terminates the automatic tabulation. The data stored in the table may then be displayed as a graph on the screen and may also be stored in an excel file for further processing. The software supplied with the unit is menu driven and is simple to operate.

4) **SES-CAMM:** This unit can also be connected to a PC through an interface module SES-CAMM. SES-CAMM is a computer aided module for connecting multiple subunits of experiments, such as Two Probe Setup to same interface on a computer. This feature is particularly useful in making this model compatible with computerized versions of complete experiments from our company.



SPECIFICATIONS

- Current Range** : Up/ Down switch operated, 0-3A per coil, i.e. 6A
- Load Regulation** : 0.1% for load variation from 0 to max.
- Line Regulation** : 0.1% for ±10% mains variation
- Display** : 3½ digit, 7 segment LED DPM
- Interfacing** : USB
- Software** : DACC and CAMM, both Window compatible
- Power** : 220V ±10%, 50Hz
- Weight** : 13Kg
- Dimensions** : 340mm X 350mm X 235mm

Computer is not included with the instruments.